

SACKSAFOAM™ I

FIREFIGHTING FOAM INJECTION SYSTEM FOR THE BAMBI BUCKET®

Enhance your Bambi Bucket® with the best foam injection systems available - the Sacksafoam™ family of foam injection systems. The Sacksafoam™ I ensures precise, reliable foam injection and is suitable for all buckets. The Sacksafoam™ I is designed to be mounted easily inside your Bambi Bucket®, keeping it away from the airframe. Add a Sacksafoam™ system to your fire-fighting arsenal!



TOP FEATURES

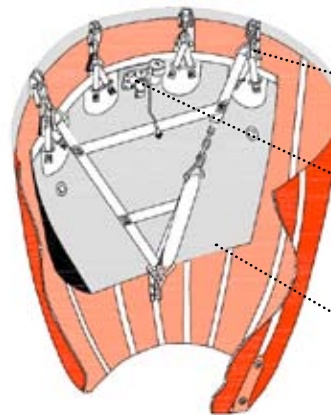
- Fast and easy installation with prewired connectors.
- Built-in injector pump within the sack.
- Operation through a control unit that houses a power switch, foam dispense timer, dispense switch, drop and total drop counters.

SACKSAFOAM™ I SPECIFICATIONS

Model	For Bambi Bucket®	Foam Concentrate Capacity	
		USG	Liters
SFF01-8018	BB8096 to BB1821	12	45
SFF02-2044	BB2024 to BB4453	30	114
SFF03-5550	BB5566 to HL5000	72	272
SFF04-7698	HL7600 to HL9800	132	500

SACKSAFOAM™ I DIMENSIONS

Model	Length		Width		Height	
	in	cm	in	cm	in	cm
SFF01-8018	34	86	5	13	23	58
SFF02-2044	56	142	5	13	28	71
SFF03-5550			5	13	37	94
SFF04-7698	70	178	5	13	56	142



Sacksafoam™ I installed inside the Bambi Bucket®

QUICK RELEASE CONNECTORS

FILLER CAP

FOAM SACK COMPLETE WITH INTERNAL PUMP, PIPING AND VALVES

ADDITIONAL FEATURES

- Quick and easy installation with prewired connectors.
- Built-in injector pump within the sack.
- Operation through a control unit that houses a power switch, foam dispenser timer, dispenser switch, drop and total drop counters.
- Only a 10A circuit is needed for small and medium Bambi Buckets and a 20A circuit for 4 L series.
- The regular control unit has its own box and is designed for temporary installations.
- The DZUS rail mount control unit is designed for installation in the helicopter instrument panel.
- A foam concentration chart is provided for the pilot to set the concentration from 0.05% up to 1.0% foam.
- The Sacksafoam™ system automatically dispenses the correct amount of foam for the selected foam mix concentration.
- Sack design compensates for concentrate weight by displacing equivalent amounts of water – no need for pilots to adjust weight calculations.

COMPATIBLE WITH

- Bambi Bucket® models BB8096 to HL9800
- Torrentula® Bucket models BBT4453 to BBTL9800
- Aqualanche™ Bucket models BBTL1518 to BBTL4453

